

# 4064 - Champ Oversized Door & Hood Dolly

Made In USA

**CHAMP**  
Frame Straightening Equipment Inc.

## Parts List

- A** Main Body
- B** Panel Jack
- C** Top Support Extension
- D** Panel Rest
- E** (4) Caster Assembly
- F** Knob
- G** Straight Bolt Assembly
- H** Curved Bolt Assembly
- I** (2) 2' Chains



### WARNING

Read all assembly instructions completely before attempting to assemble unit. Improper assembly could result in damage to Dolly or injury to user. Dolly is designed to hold various automotive parts. The Dolly should be inspected regularly for damage. Do not use if any cracks in metal or welds are present.

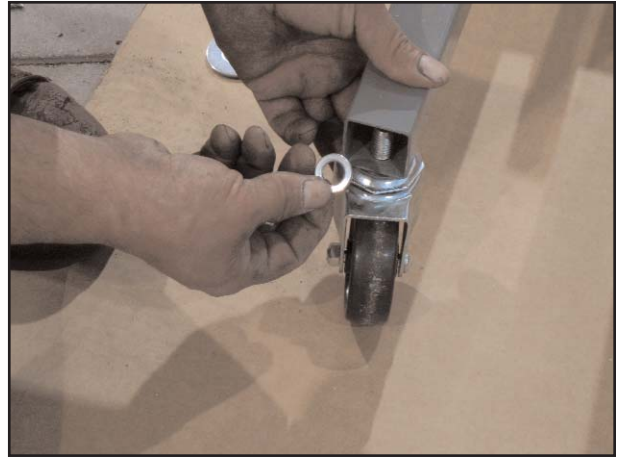
Champ Frame Straightening Equipment, Inc.

1.



Insert post of Caster (E) in the bottom of Main Body (A).

2.



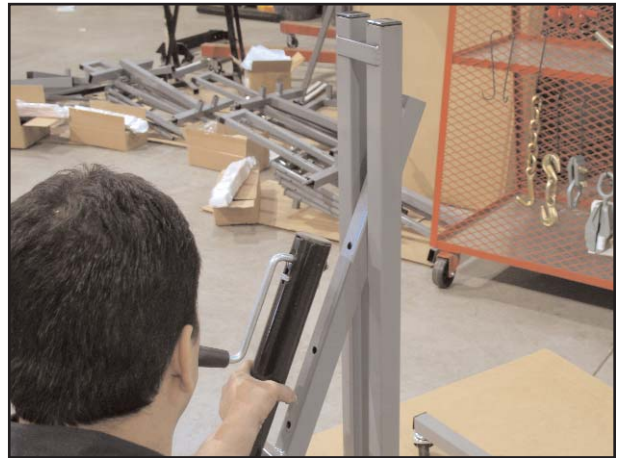
Place locking washer on post of Caster (E) and fully tighten nut. Insert cap from Caster Assembly (E) on end of Main Body (A) post. Repeat on all 4 corners of Main Body.

3.



Remove black plate from Panel Jack (B).

4.



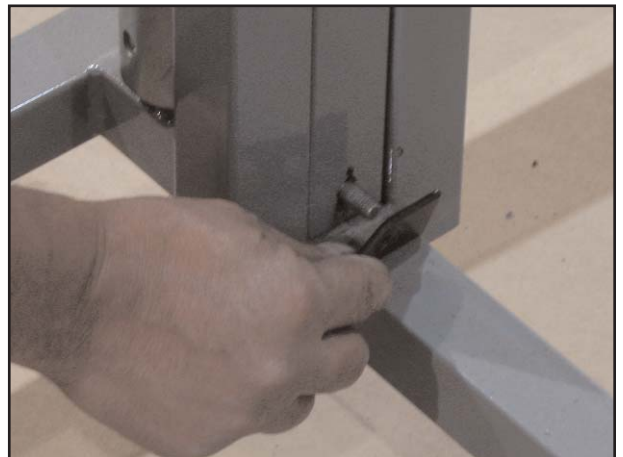
Slide top of Panel Jack (B) in between the two upper posts of Main Body (A).

5.



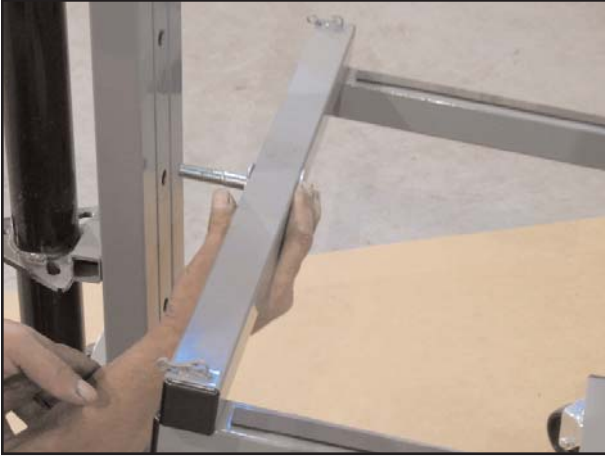
Place bottom of Panel Jack (B) onto post on the base of the Main Body (A).

6.



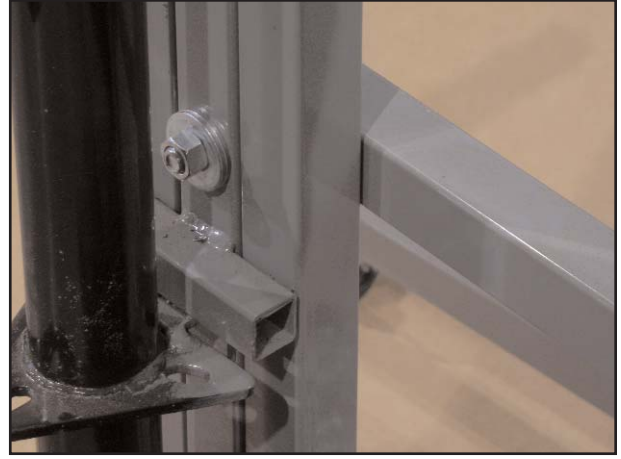
Re-install black plate onto bottom of Panel Jack (B). *Note: make sure the black plate stays horizontal and locks in the Panel Jack between the 2 upper posts of the Main Body.*

7.



Insert Panel Rest (D) into desired hole of the Panel Jack (B).

8.



Insert washers and fully tighten nut on bolt of the Panel Rest (D).

9.



Insert the Top Support Extension (C) into Panel Jack (B).

10.



Select desired height of Top Support Extension (C). Insert Knob (F) into top hole of Panel Jack (B), tighten knob to lock Top Support Extension (C) in place.

11.



Insert Straight Bolt (G) in between the 2 posts of Top Support Extension (C) and tighten with washer and nut. Repeat for Curved Bolt Assembly (H). *Note: Make sure Curved Bolt is in front of Straight Bolt.*

12.



Insert Chain (I) into hook on side of Panel Rest (D). Repeat on other side of Panel Rest (D) with second Chain (I).





**Assembled 4064 - Oversized  
Door & Hood Dolly**  
*Note: Door in picture not included*